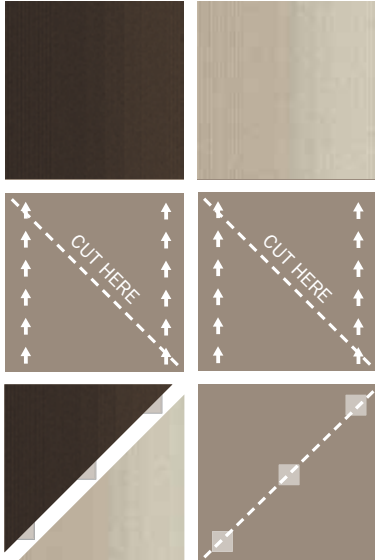


Pattern by Tile

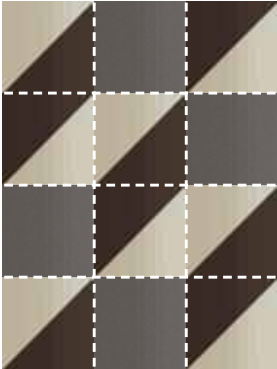
Our modular carpet is square but with a little creativity and our TacTiles® installation system, you can easily create and recreate patterns as simple, sophisticated or fantastic as you please. TacTiles connectors adhere InterfaceFLOR tiles to one another – whether they're squares or cut into rectangles and triangles – and not the floor beneath. So, no matter how you install it, you're free to change your mind. But this freedom, along with the TacTiles connectors themselves, only comes from InterfaceFLOR.

DIAGONAL-CUT

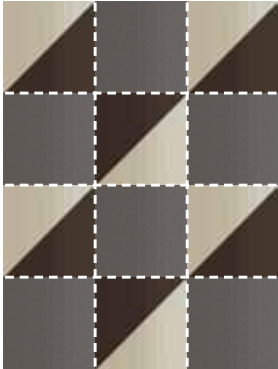


Join the halves together with TacTiles connectors

Layout 1



Layout 2



SMALL SQUARES



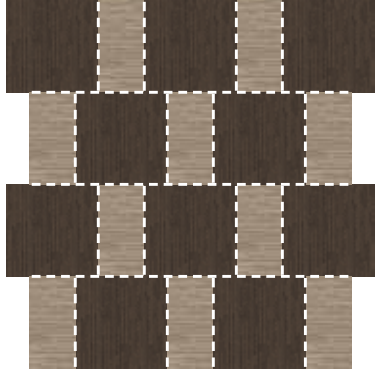
Cut accent tiles into 4, 9, 16 or 36 small squares.



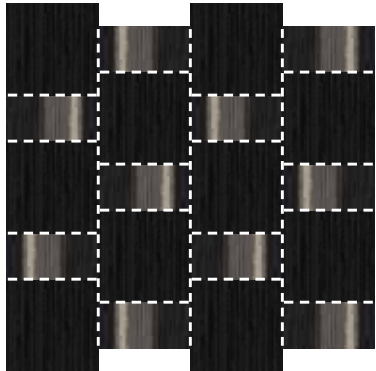
HALF TILES



Layout 1



Layout 2



Layout 3 - Half Tiles Only

